

Lab Video

Summary

This video is recorded in a lab with a number of individuals visible in the video. The below cuts show a selection of frames from this video. Faces are visible in some frames of the video. On the other hand a number of frames are either out-of-focus or were recorded when the mobile device was facing downwards. This video showcases the use of (salient) face detection when constructing the final-cut of the video.

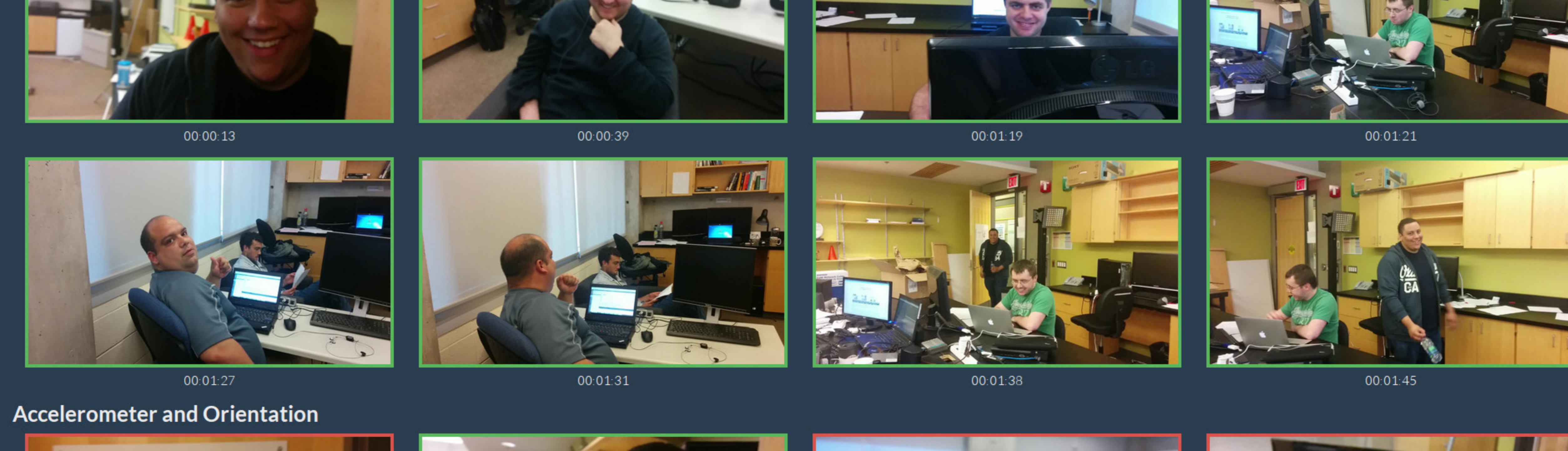
Final Cuts

Below are example frames of frames from each final cut examined in the paper, along with our manually edited cut. The "desirableness" of each frame is represented by the background color of the frame. A green background indicates a good frame, while a red frame indicates a bad frame. The captions under each frame denote the timestamp of the extracted frame.

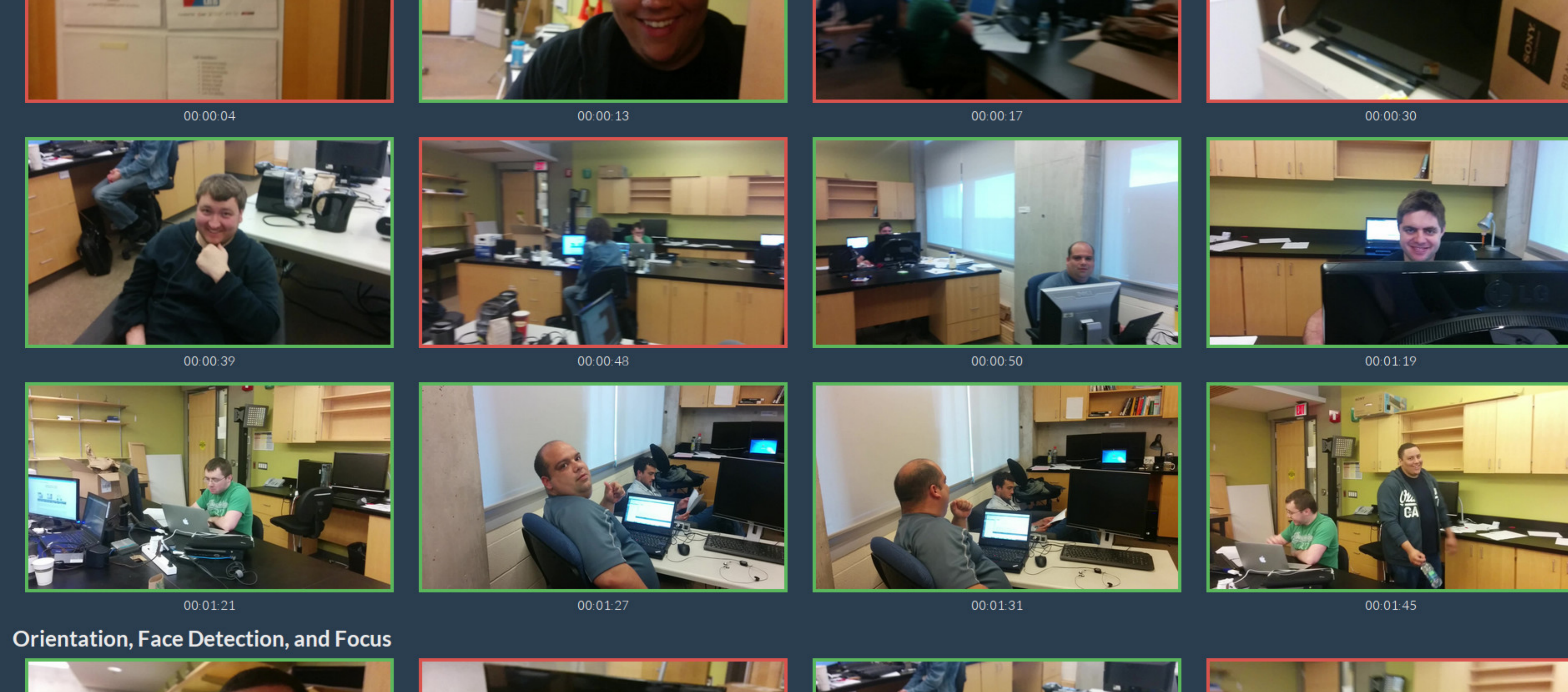
Quality Measures and Durations

Final Cut	Accuracy (p)	Duration (s)
Accelerometer and Orientation	0.43	87.3
Orientation, Face Detection, and Focus	0.77	52.3
Accelerometer, Orientation, Face Detection, and Focus	0.90	39.5

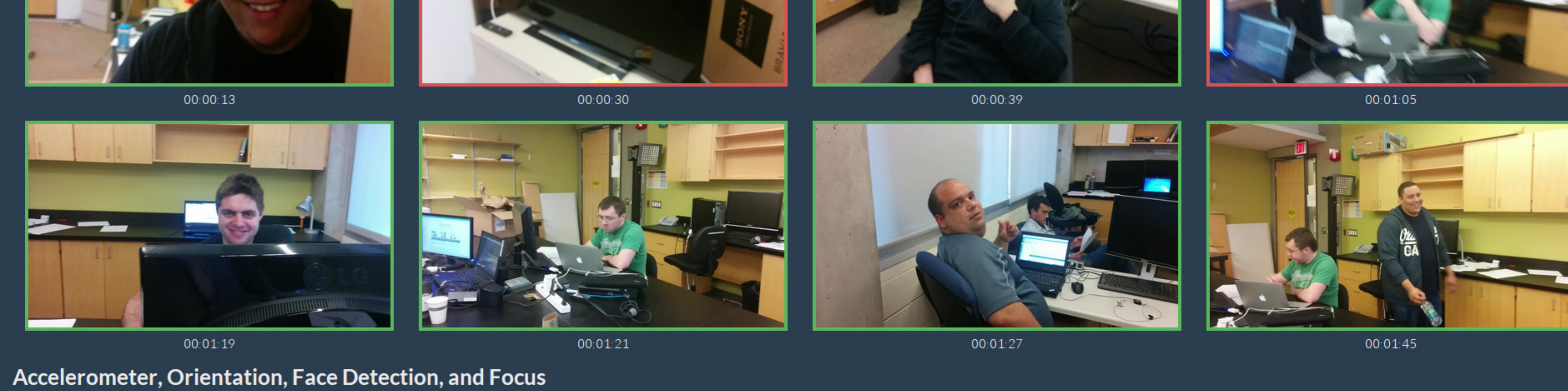
Manually Edited



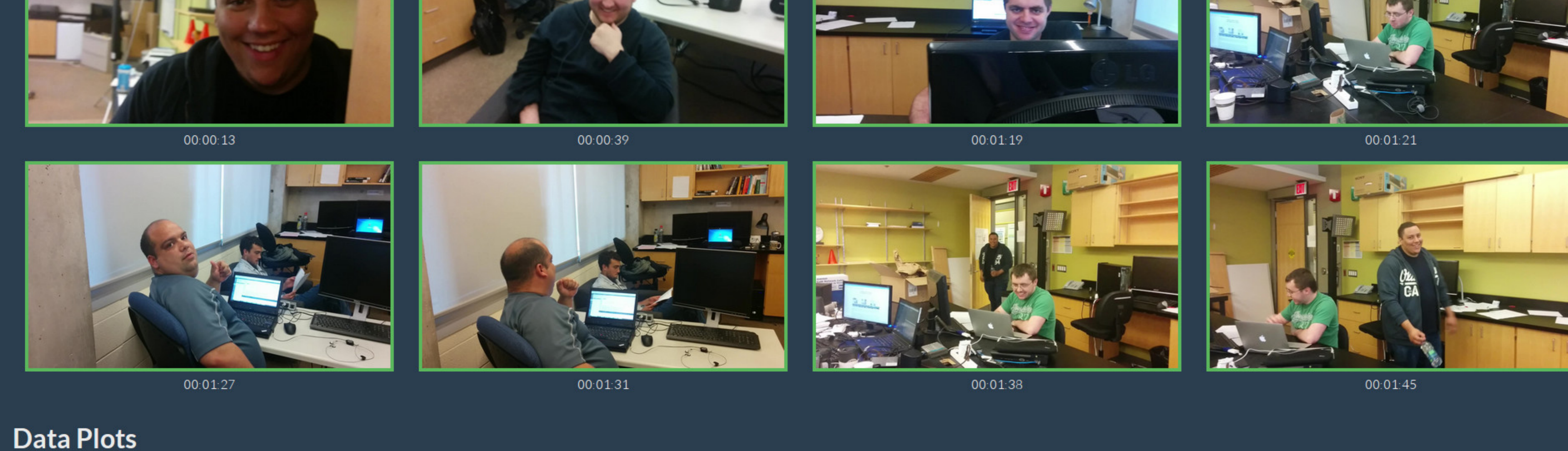
Accelerometer and Orientation



Orientation, Face Detection, and Focus



Accelerometer, Orientation, Face Detection, and Focus



Data Plots

